

Stilspringprüfung

Klasse: 115

Samstag, 20. Juli 2024

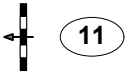
Richtverf.: A

ÖTO § 204/4

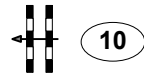
10 15 20 25 30 35 40 45 50 55 60 65 70 75 80 85 90 95 100

Waldarena

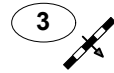
Ziel



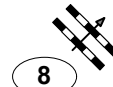
11



10



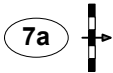
3



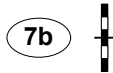
8



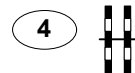
9



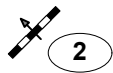
7a



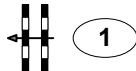
7b



4



2

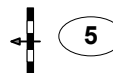


1

Start



6



5



RICHTER

•0 Höhe: 1,15 mtr.

•5 Tempo: 350 m/Min.

•10 Bahnlänge: 510 mtr.

•15 Erlaubte Zeit: 88 sek.

Höchstzeit: 176 sek.

•20

•25 Hindernisse: 11

•30 Sprünge: 12

•35

•40 **IsiGrade**
Jumps by Rothenberger

•45

•50

Parcours Design

Madl Franz

Oberwasserlechner Petra