



15. - 18. März 2018

Prüfung Nr.: 3

Fehler/Zeit-Springen Klasse: S*

Richtverf.: A Fehler/Zeit

gem. LPO § 501 / A.1

Höhe: 1,40 m

Tempo: 350 m/Min.

Bahnlänge: 410 m

Erlaubte Zeit: 76 sec

Höchstzeit: 152 sec

Hindernisse: 10

Sprünge: 12

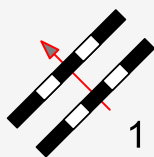
Hindernisfehler: sec

Stechen:

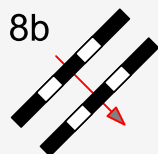
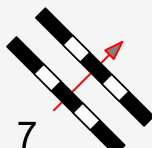
Bahnlänge: 0 m

Erlaubte Zeit: 0 sec.

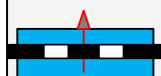
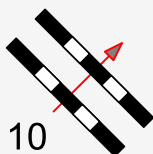
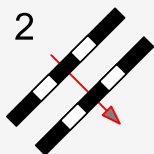
Höchstzeit: 0 sec.



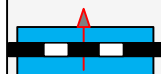
Start



Ziel



4



3



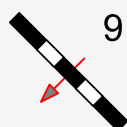
5a



5b



6



9